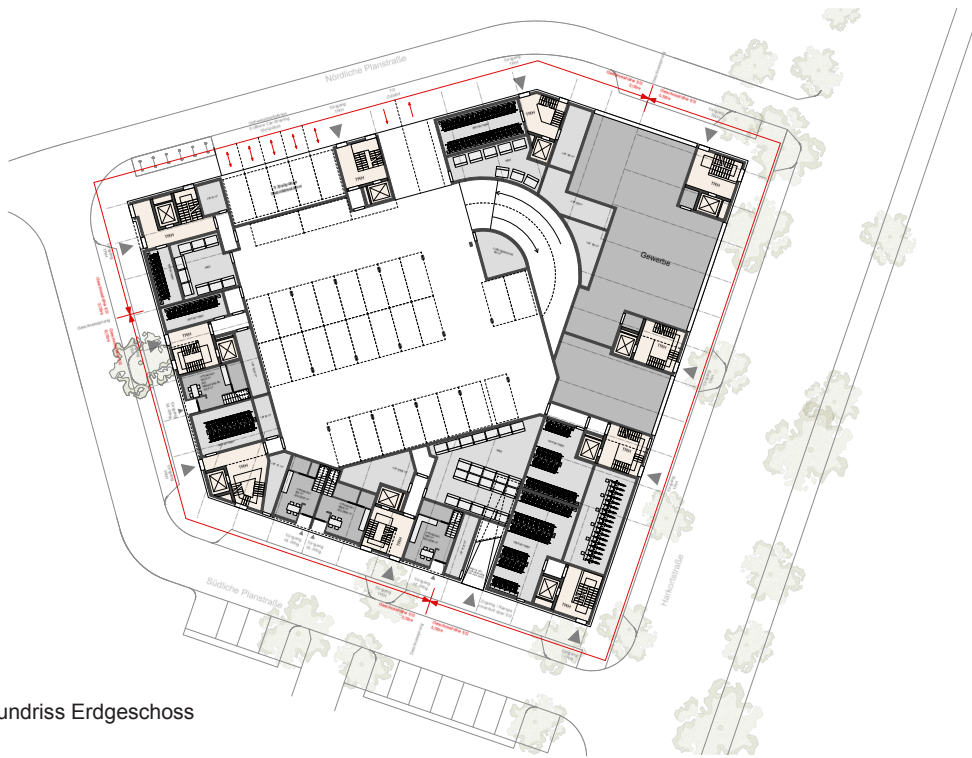




Nord Perspektive

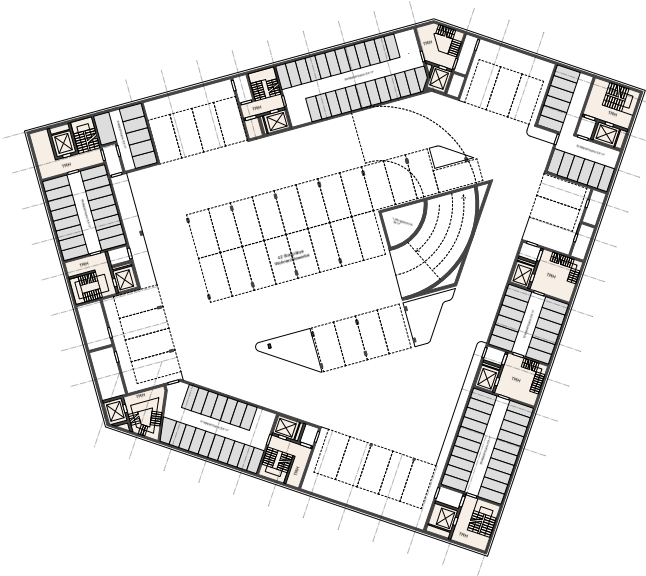


Lageplan



Grundriss Erdgeschoss

Neue Mitte Altona



Grundriss Untergeschoss

Grundriss Zwischenaeschoß



Ansicht Nordseite



Ansicht Westseite



Ansicht Süd



Ansicht Ost



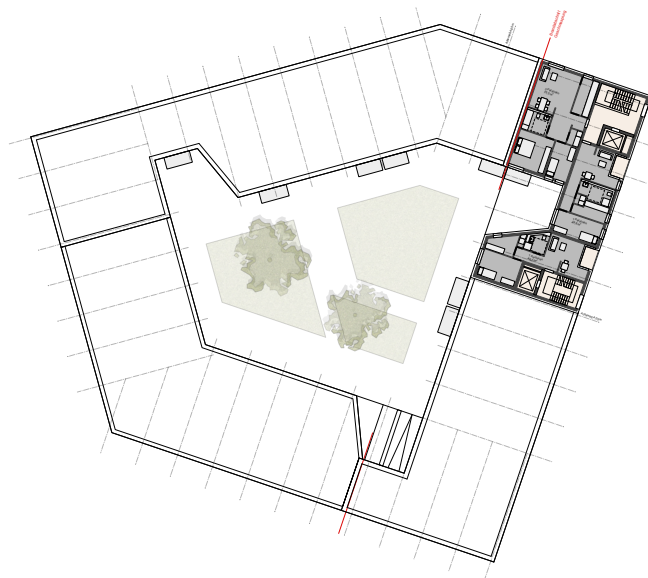
Grundriss 1.- 4.Obergeschoss



Neue Mitte Altona



Grundriss 5.Obergeschoss



Grundriss 6.Obergeschoss



Ansicht Ostseite



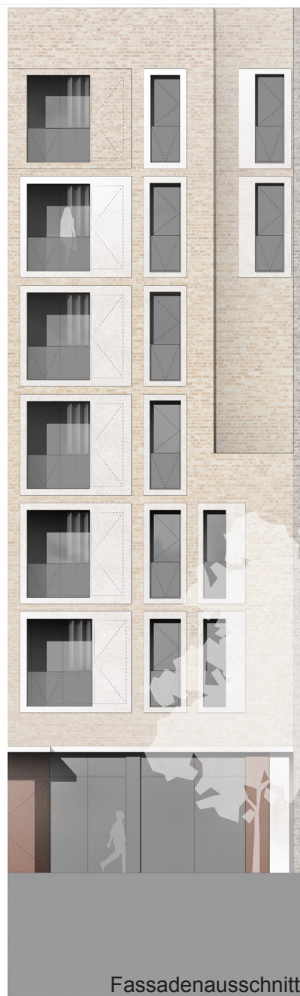
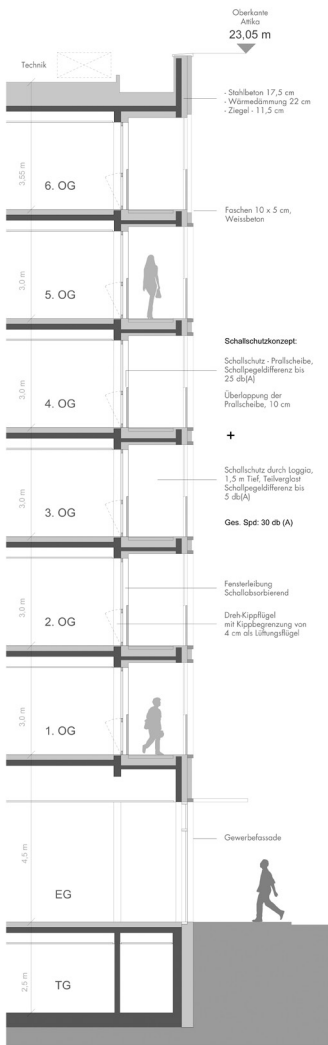
Ansicht Süd



Ansicht West



Ansicht Nord

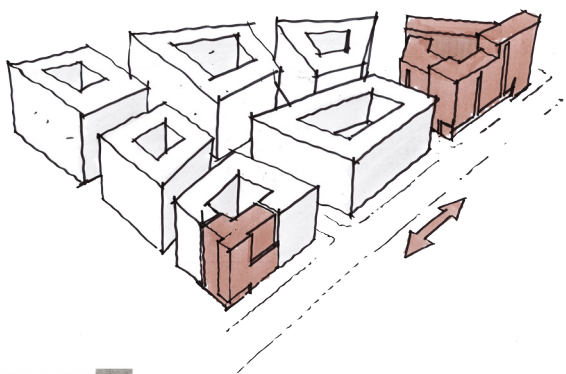


Neue Mitte Altona





Süd Perspektive



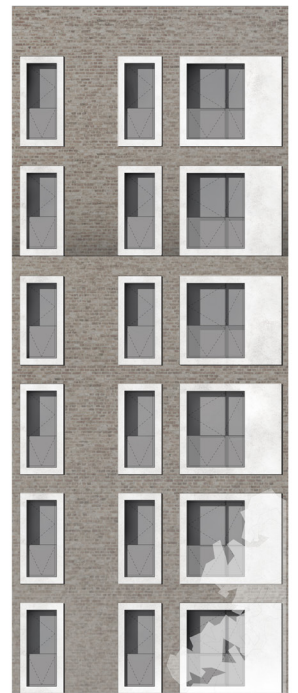
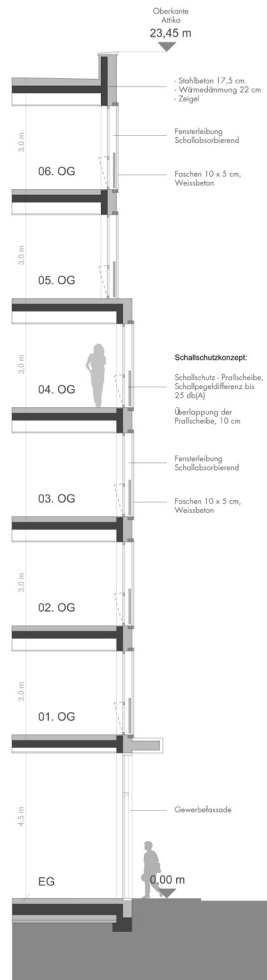
Entwurfskonzept



Ansicht West



Ansicht Ost



Fassadenausschnitt